



# GMT MONTHLY MEMBERSHIP PROGRESS REPORT

Results as of: 6/30/2020

## GMT Constitutional Area 5 - K, Group K

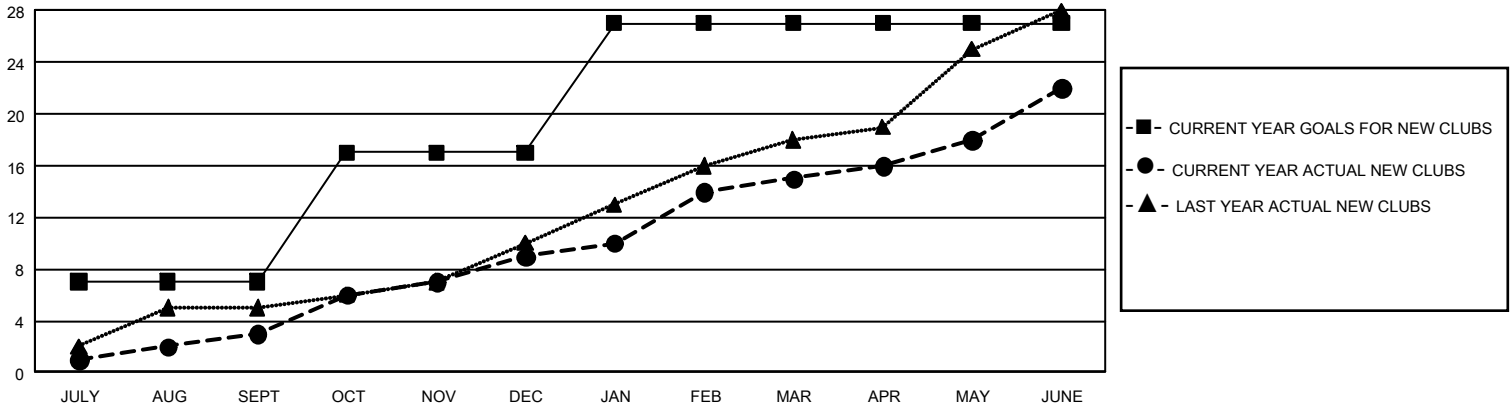
GMT: OPEN

REPORT DOES NOT INCLUDE CLUBS IN UNDISTRICTED AREAS.

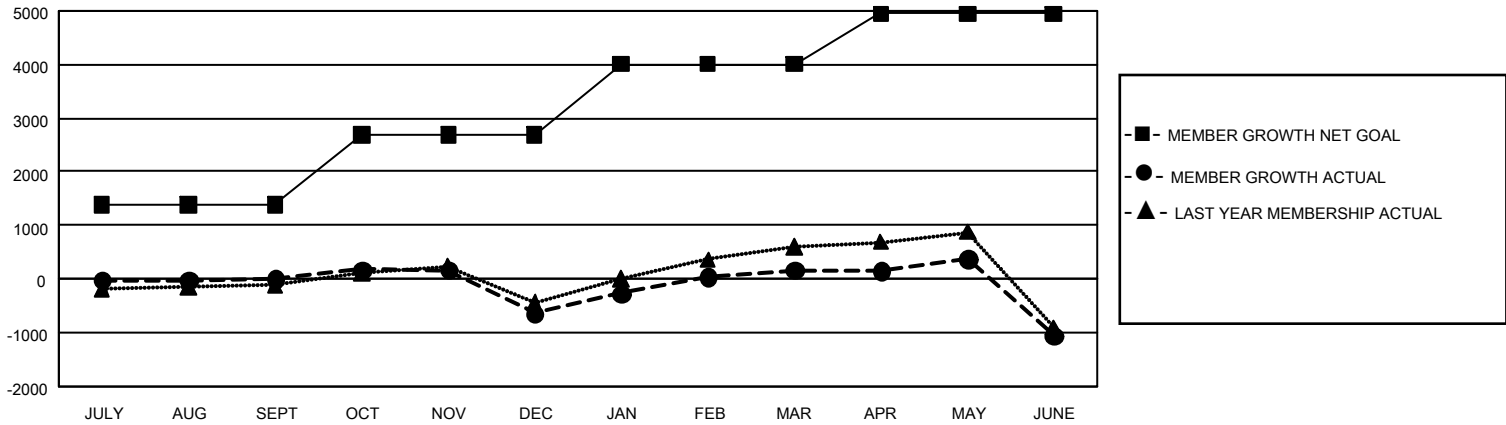
Clubs			
RESULTS FOR 2019-2020			
QUARTER	NEW CLUB GOAL	NEW CLUBS	DROPPED CLUBS
JULY/AUG/SEPT	21	3	7
OCT/NOV/DEC	30	6	23
JAN/FEB/MAR	30	6	2
APR/MAY/JUNE	0	7	2

Members			
RESULTS FOR 2019-2020			
QUARTER	MEMBER GROWTH NET GOAL	MEMBER GROWTH ACTUAL	DROPPED MEMBERS ACTUAL (including transfers)
JULY/AUG/SEPT	4,140	1,350	1,212
OCT/NOV/DEC	3,900	1,253	1,848
JAN/FEB/MAR	3,990	1,522	520
APR/MAY/JUNE	2,820	1,417	2,586

**GOALS AND ACTUAL NEW CLUBS CUMULATIVE**



**GOALS AND ACTUAL MEMBERS CUMULATIVE**



<b>DROPPED CLUBS: 34</b>	766 CLUBS OF 1,006 ADDED 1 OR MORE NEW MEMBERS	<b>GENDER DISTRIBUTION</b> MALE            21,403 (68.72%) FEMALE         9,742 (31.28%)
<b>DROPPED MEMBERS</b> DECEASED            67 CLUB CANCELLED     428 OTHER                 5,671 <hr/> TOTAL                 6,166	<a href="#">CLICK HERE FOR CUMULATIVE MEMBERSHIP DATA</a>	TOTAL FAMILY UNIT MEMBERS            4,101  FAMILY MEMBERS PAYING HALF DUES     2,413